

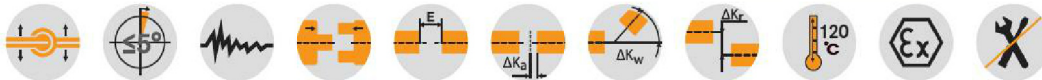
ROTEX® A-H

Flexible jaw couplings

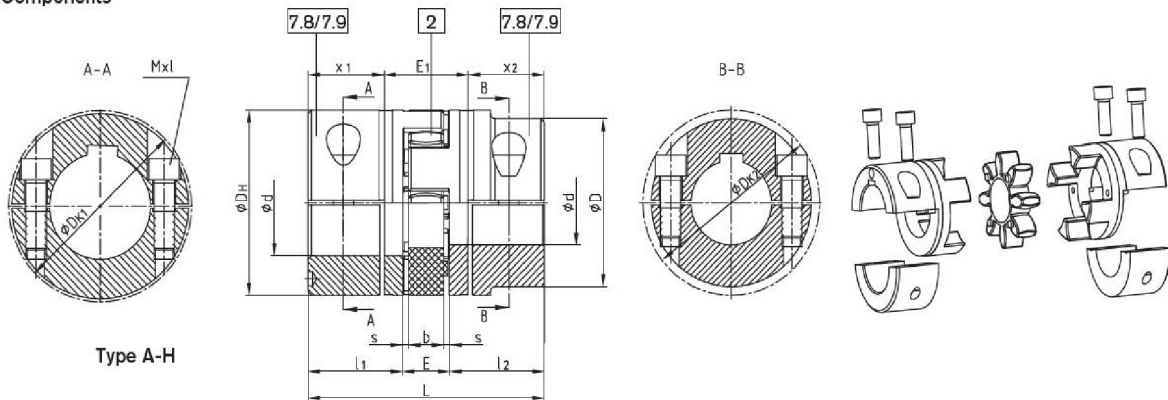
Drop-out center design coupling



For legend of pictogram please refer to flapper on the cover



Components



Type A-H

ROTEX® Type A-H														
Size	Max. finish bore Ød [mm]	Dimensions [mm]										Cyl. screws DIN EN ISO 4782		
		L	l ₁ :l ₂	E	b	s	D _H	D	DK ₁	DK ₂	x ₁ /x ₂	E ₁	Mxl	Tightening torque T _A [Nm]
19	20	66	25	16	12	2,0	40	—	46	—	17,5	31	M6x16	14
24	28	78	30	18	14	2,0	55	—	57,5	—	22,5	33	M6x20	14
28	38	90	35	20	15	2,5	65	—	73	—	25,5	39	M8x25	35
38	45	114	45	24	18	3,0	80	—	83,5	—	35,5	43	M8x30	35
42	50	126	50	26	20	3,0	95	85	—	93,5	39	48	M10x30	69
	—							97	—	M10x35				
48	55	140	56	28	21	3,5	105	95	—	105	45	50	M12x35	120
	—							108,5	—	M12x40				
55	65	160	65	30	22	4,0	120	110	—	119,5	50	60	M12x40	120
	70							—	122	—			M12x45	
65	70	185	75	35	26	4,5	135	115	—	123,5	60	65	M12x40	120
	80							—	132,5	—			M12x45	
75	80	210	85	40	30	5,0	160	135	—	147,5	67,5	75	M16x50	295
	90							—	158	—				
90	90	245	100	45	34	5,5	200	160	—	176	81,5	82	M20x60	580
	110							—	197	—				
100 ¹⁾	110	270	110	50	38	6,0	225	180	—	185,5	84	102	M16x50	295
110 ¹⁾	120	295	120	55	42	6,5	255	200	—	208	90	115	M20x60	580
125 ¹⁾	140	340	140	60	46	7,0	290	230	—	242,5	105	130	M24x70	1000

Please note:

With maximum bore the feather keyways are offset to each other by approx. 5°
Hub material up to size 90: steel, from size 100: GJS

7.8= Shell clamping hub without feather key
7.9= Shell clamping hub with feather key

¹⁾ From size 100: 4 clamping screws for each clamping hub.

Ordering example:	ROTEX® 38	A-H	98 Sh-A	7.8	Ø 38	7.8	Ø30
	Coupling size	Type	Spider hardness	Hub type	Finish bore	Hub type	Finish bore